

Import/Export plug-in for Domino Designer

Main Details

Summary	Allow Xpage developers to <ol style="list-style-type: none">1. Export resources from the Domino Designer projects to the local file system;2. Import resources from the local file system into an existing Domino Designer project.
Technology	Eclipse
Version	1.0.0
Domino Designer Version	8.5.0

Author

Guo Yi
IBM employee, Regular
IBM China Software Development LAB
IBM Software Group, WPLC
China

Deployment

Update site	Local Folder
Feature Name	Import/Export Feature
Feature ID	com.ibm.designer.extensibility.copyfile.feature
Component Name	Import Wizard
Component ID	com.ibm.designer.extensibility.copyfile.wizards.ImportWizard
Component Name	Export Wizard
Component ID	com.ibm.designer.extensibility.copyfile.wizards.ExportWizard

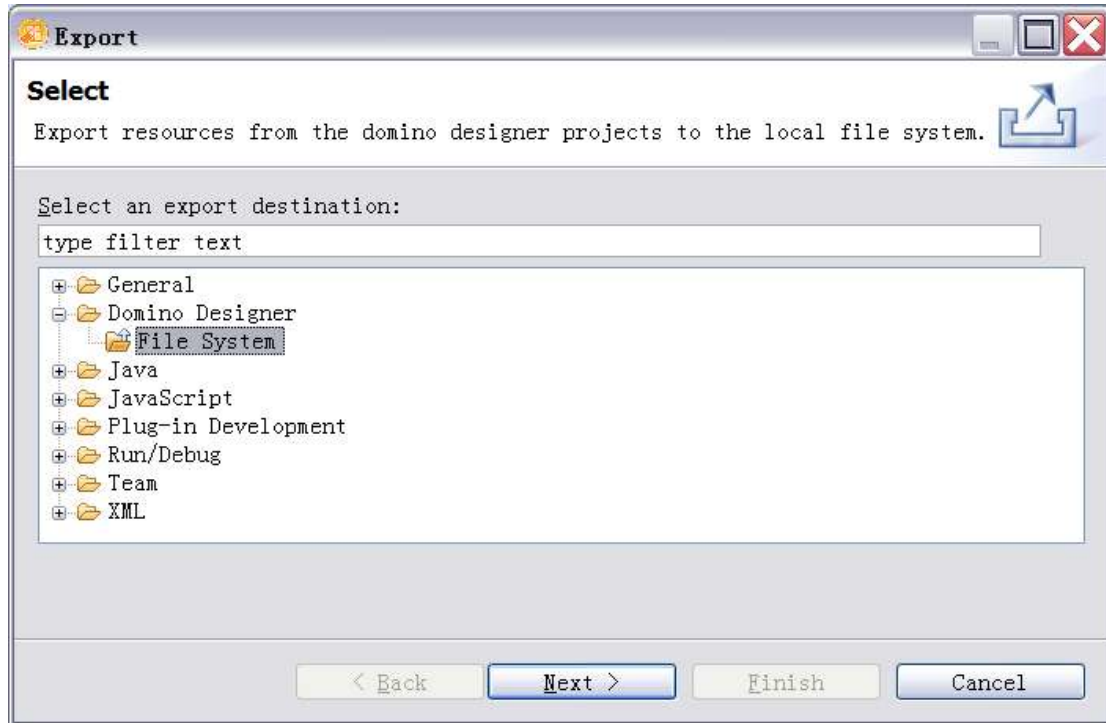
Usage

This plug-in extends the Eclipse export/import wizards and it is able to export/import Domino Designer resources out/in the Domino Designer projects. Since the export/import menus are disabled in the Domino perspective, you need to go to the Java perspective to run this plug-in.

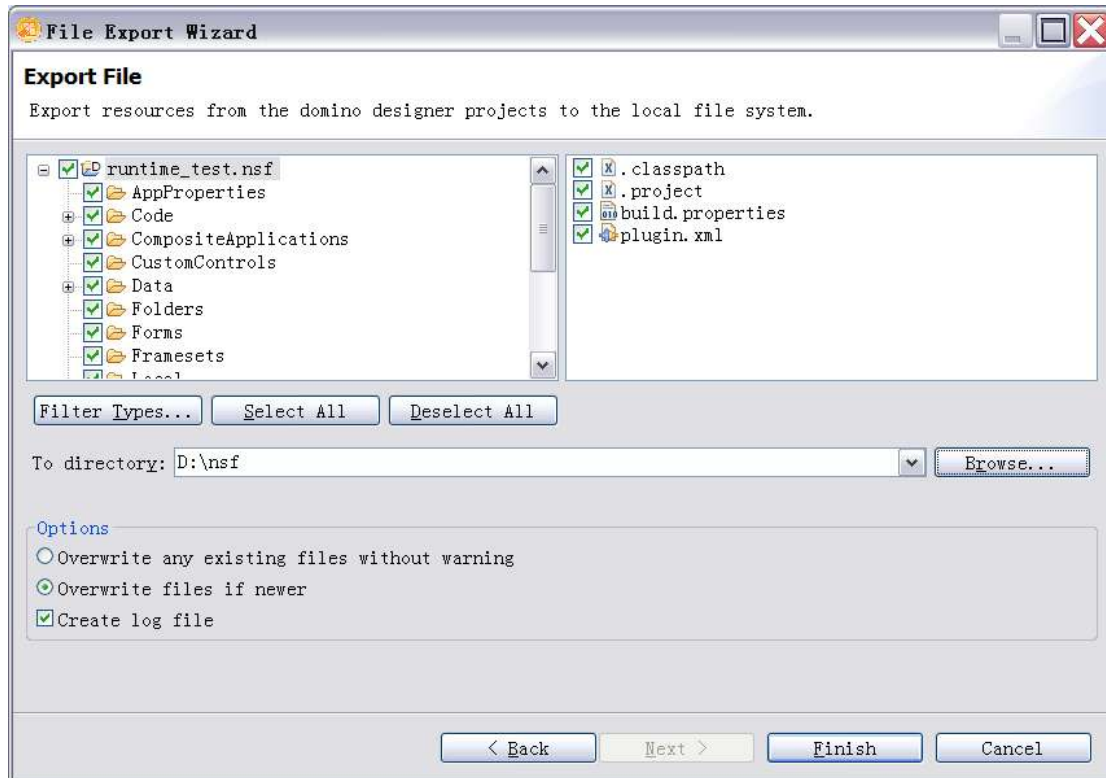
Window → Open Perspective → Other... → Java

Export

File → Export... → Domino Designer → File System



Click on "Next >" and you will get the File Export Wizard as below.



Select source files to be exported. All types of designer elements are able to be exported by the original Eclipse export wizard and this plug-in just changes the timestamp of the target file to the local timestamp of the designer element.

Select the destination directory. A folder with the same name of the designer project will be created in this destination directory. And sub-folders will be created to follow the hierarchies of each exported resource's complete path

Select options:

Overwrite any existing files without warning radio: export all selected resources.

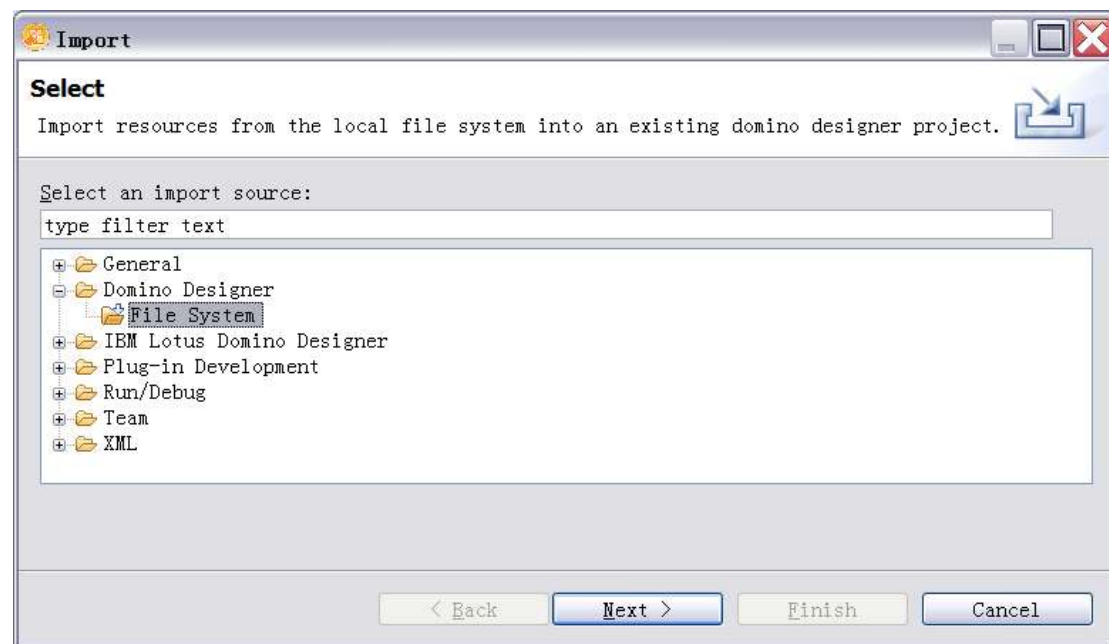
Overwrite files if newer radio: only export resources when they are newer than the ones in file system or the ones do not exist in file system.

Create log file checkbox: an export log file will be created in the destination directory if you check on this option.

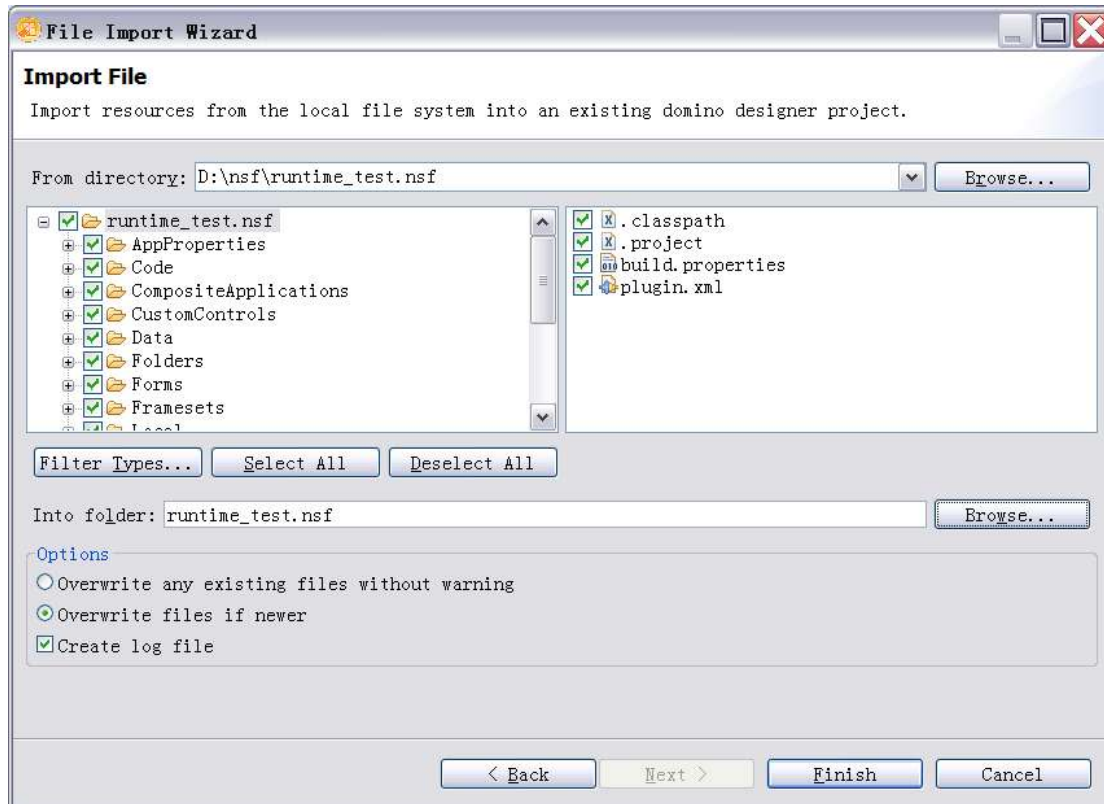
Click on “Finish”.

Import

File → Import... → Domino Designer → File System



Click on “Next >” and you will get the File ImportWizard as below.



Select source directory. NOTE that the name of the source directory MUST end with .nsf.

Select source files to be imported. All types of designer elements files are able to be imported by this plug-in.

Select the destination directory. NOTE that the hierarchy of the destination folder must be ONE, and the name of the destination folder must be the same as the source directories'.

Select options:

Overwrite any existing files without warning radio: import all selected resources.

Overwrite files if newer radio: only import resources when they are newer than the ones in the Domino Designer project or the ones do not exist in the project.

Create log file checkbox: an import log file will be created in the parent folder of the source directory if you check on this option.

Click on "Finish".